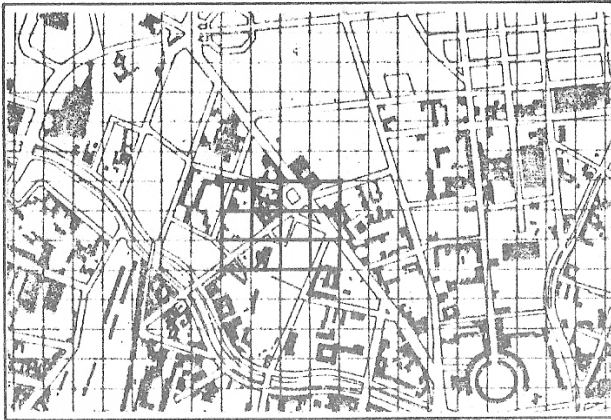


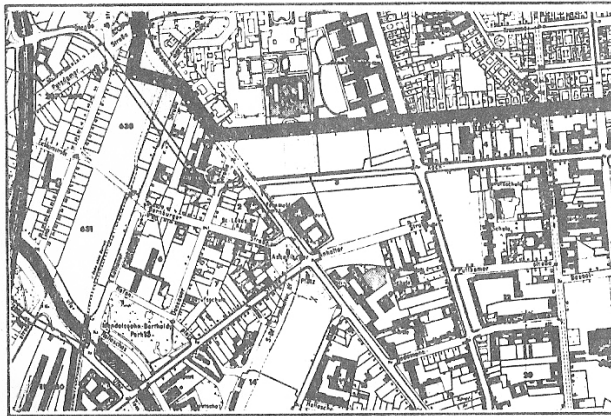
THE  
URBAN  
GARDEN



LORNA McNEUR

HOME FOR THE ORPHANED AND AGED  
HOME FOR THE BUILDINGS WHO HAVE SURVIVED  
THE ONSLAUGHT OF DISRESPECT.  
HAVING BEEN BUILT WITH AN ADJOINING THOUGHT  
AND NOW HAVING BEEN LEFT WITH THE SCAR OF SEVERENCE,  
THEY STAND ALONE- WITH SCARS, STRENGTH, AND A NEW DISCOVERED BEAUTY.  
A BEING HAS EMERGED; IT'S RELATIVES DESTROYED- IT BECOMES  
A MONUMENT FOR THE GREAT TERROR THAT ONCE EXISTED.

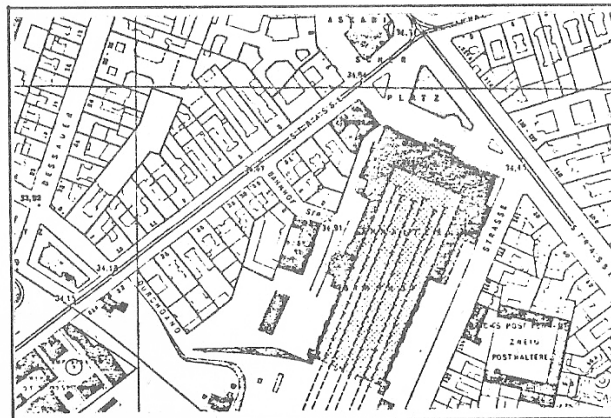
THIS HOME FOR THOSE WHO HAVE GROWN OLD  
AND LIVED TO SPEAK OF THE MEMORY.  
THIS HOME FOR THOSE JUST BORN WITHOUT RECEIVING  
THEIR NEED FOR EXISTENCE.  
ONE HAS SURVIVED, THE OTHER MUST BEGIN TO DO SO.



HOW MUCH DOES ONE NEED THE OTHER.

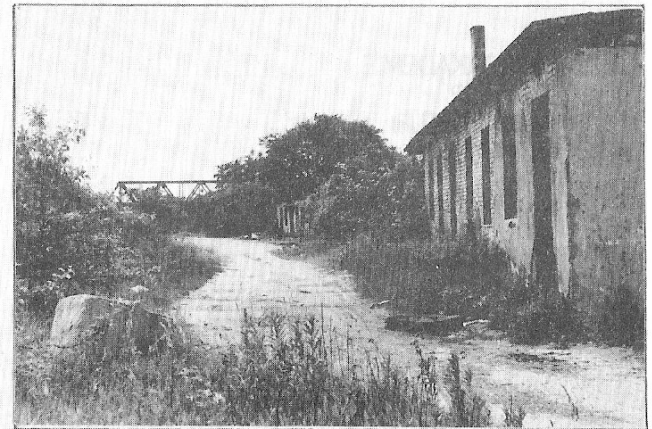
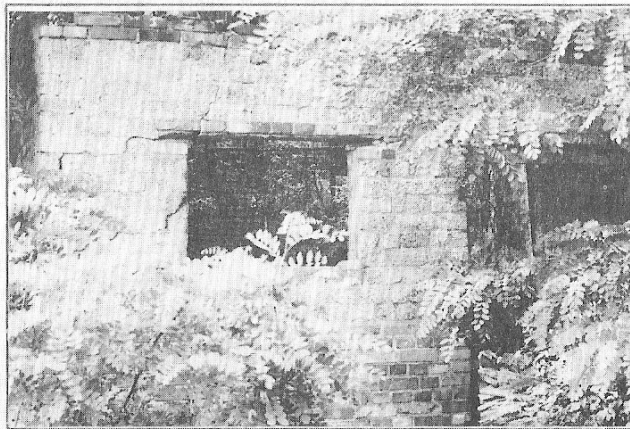
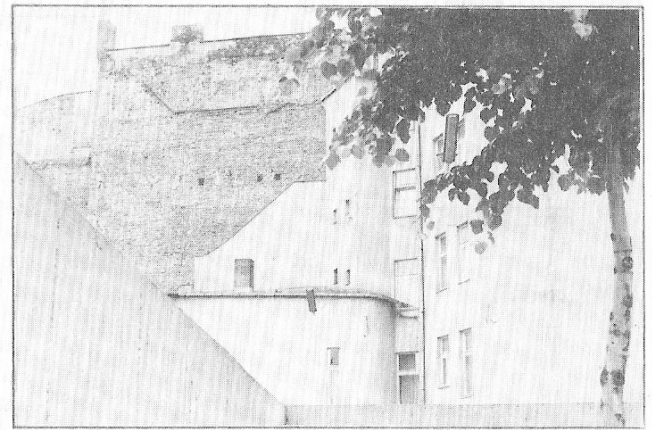
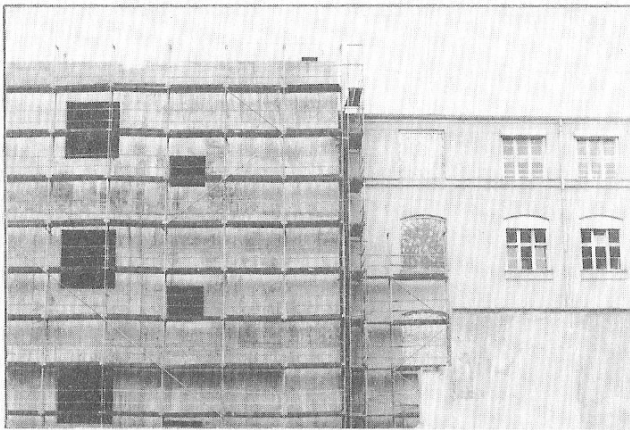
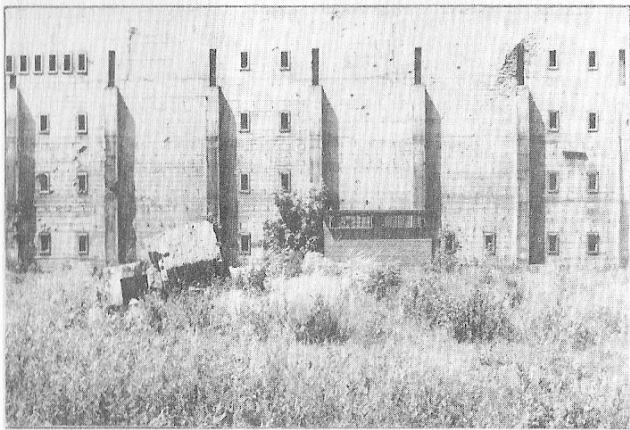
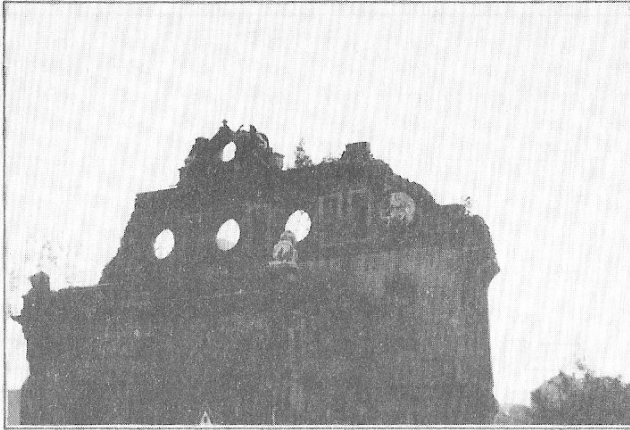
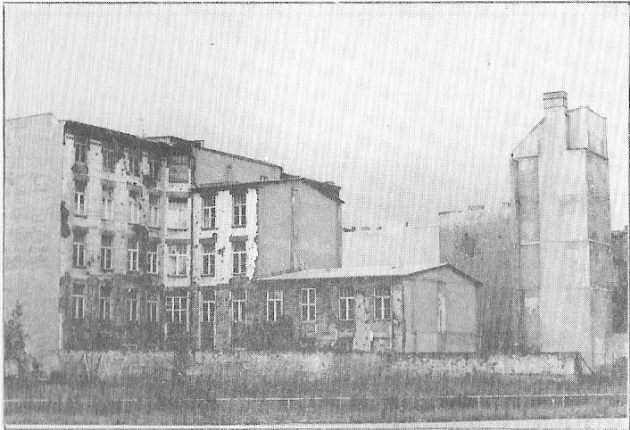
HOME FOR THE ORPHANED AND THE AGED. A FARM TO FEED NEW  
GREEN CELLS. A PLANT EMERGES FROM THE EARTH FROM WHICH  
THE BODY OF ONE'S FRIEND RESTS. THE PLANT LIVES FOR THE  
TWO FRIENDS. THERE IS NO ONE TO TELL OF THE MISERIES OF  
THE PAST.

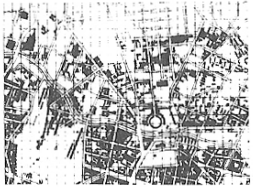
A CHILD NEEDS THE HISTORY FROM A LOVED ONE-  
SOMETHING, WHICH A BOOK WILL NEVER ACHIEVE-  
TO LOOK INTO THE EYES OF A GREYING PERSON  
COVERED WITH THE BLUE FILM OF AGE AND THE  
KNOWLEDGE OF SURVIVAL- THIS CHILD WILL GROW  
-WITH THE SAME CARE THAT THE PLANTS RECEIVE.  
FROM THE HEART OF THIS HISTORY THE KNOWLEDGE  
WILL BE RECEIVED BY LISTENING EARS.



THE FARM- LIFE  
THE AGED- HISTORY, STRENGTH, SURVIVAL  
THE CHILDREN- BIRTH, LIFE, FUTURE  
THE FIELD- MUSEUM, SCULPTURE GARDEN, COURTYARD,  
DEFINITION OF MOVEMENT FROM WITHIN.  
THE BUILDINGS- HISTORY, STRENGTH, SURVIVAL, LIFE  
THE OBJECTS ON THE FIELD- HISTORICAL CONTEMPLATION  
THE MONUMENT- THE COVER OF A BOOK  
THE CEMETERY- A CONTEMPLATION OF THE CYCLE  
THE CEMETERY- A MONUMENT TO LIFE  
THE CEMETERY- A CLOSED LIBRARY. RESPECT FOR THE BOOK  
WHICH ONCE SHARED IT'S PAGES.







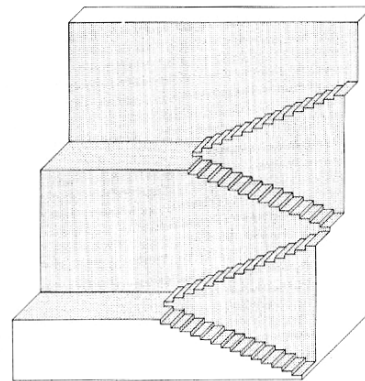
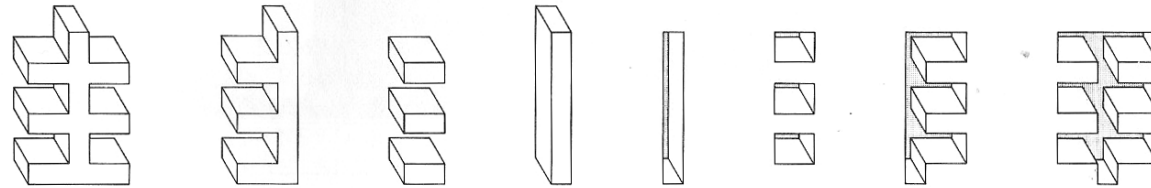
KARTE  
VON  
BERLIN

SÜDLICHE  
FRIEDRICHSTADT

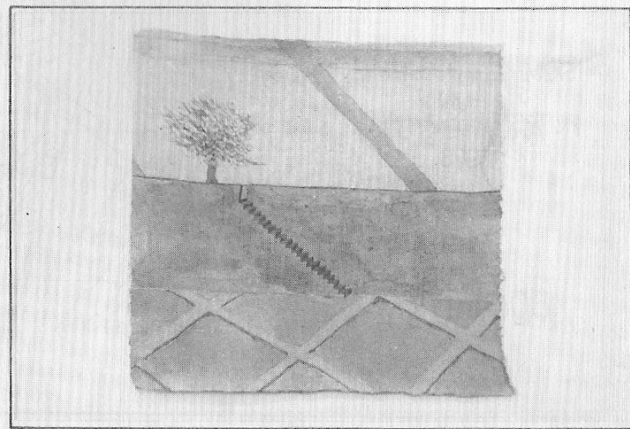
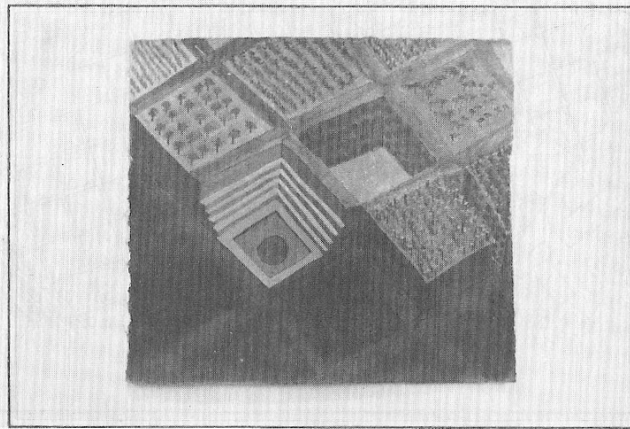
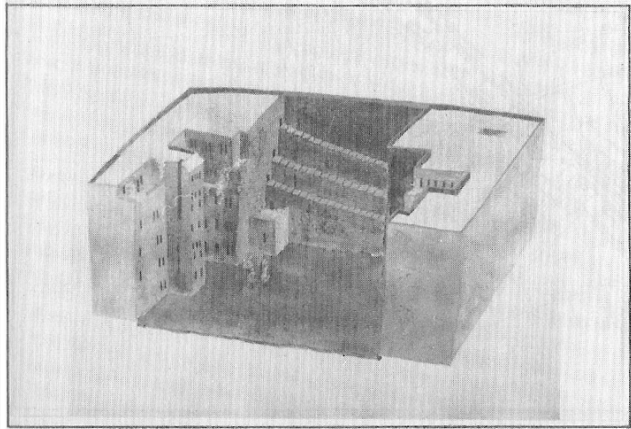
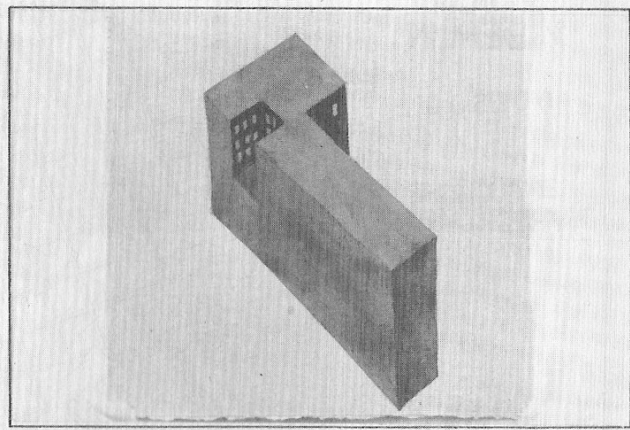
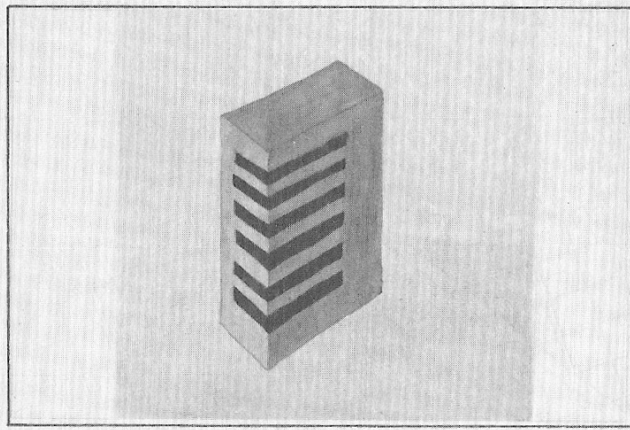
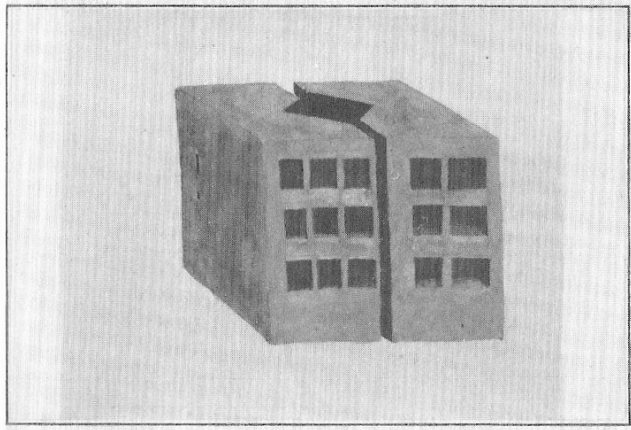
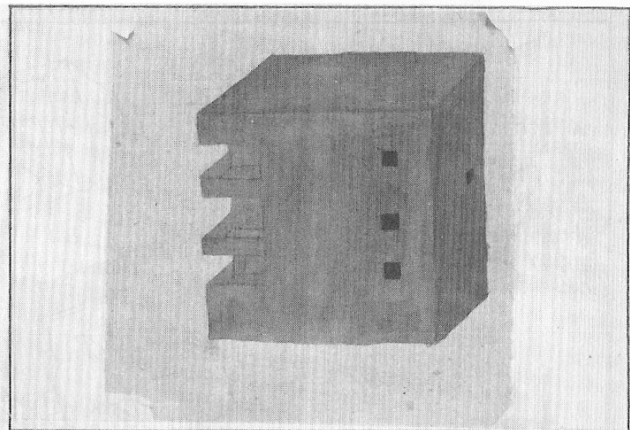
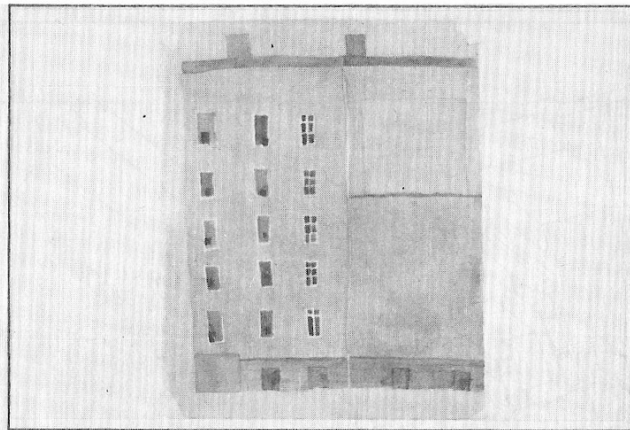
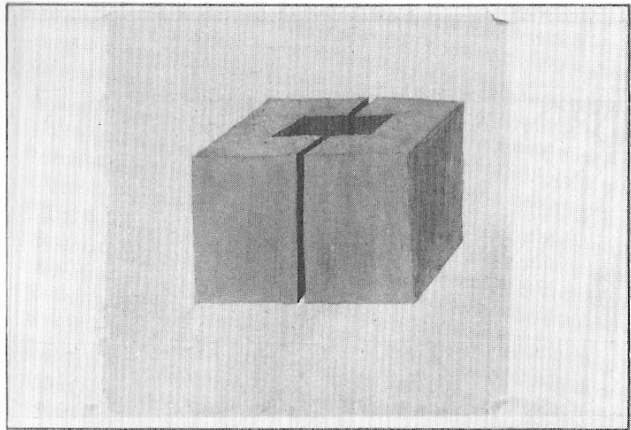
SOMMERAKADEMIE  
FÜR  
ARCHITEKTUR  
1978

LM-03

CONCEPT IMAGE









KARTE  
VON  
BERLIN

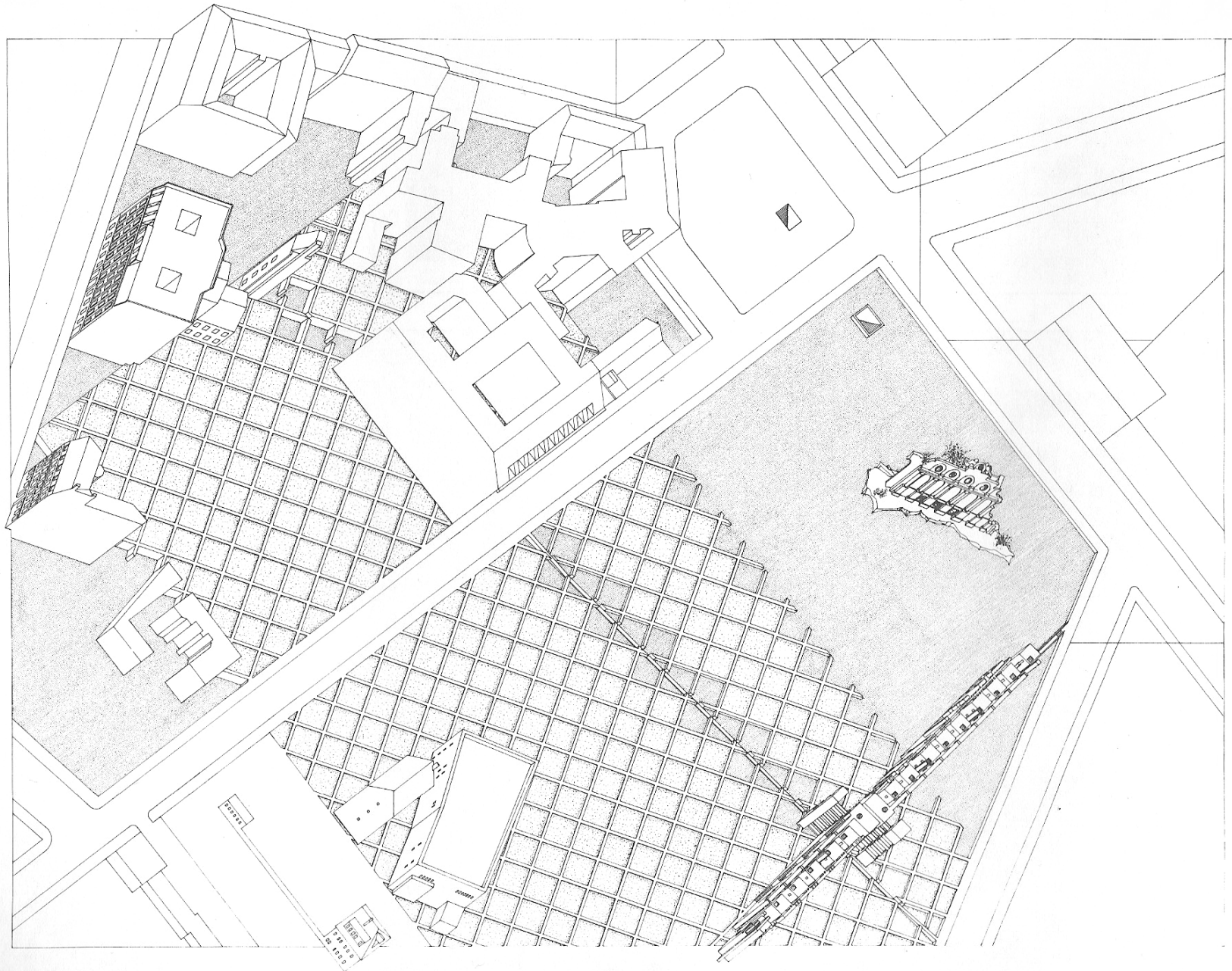
1:500

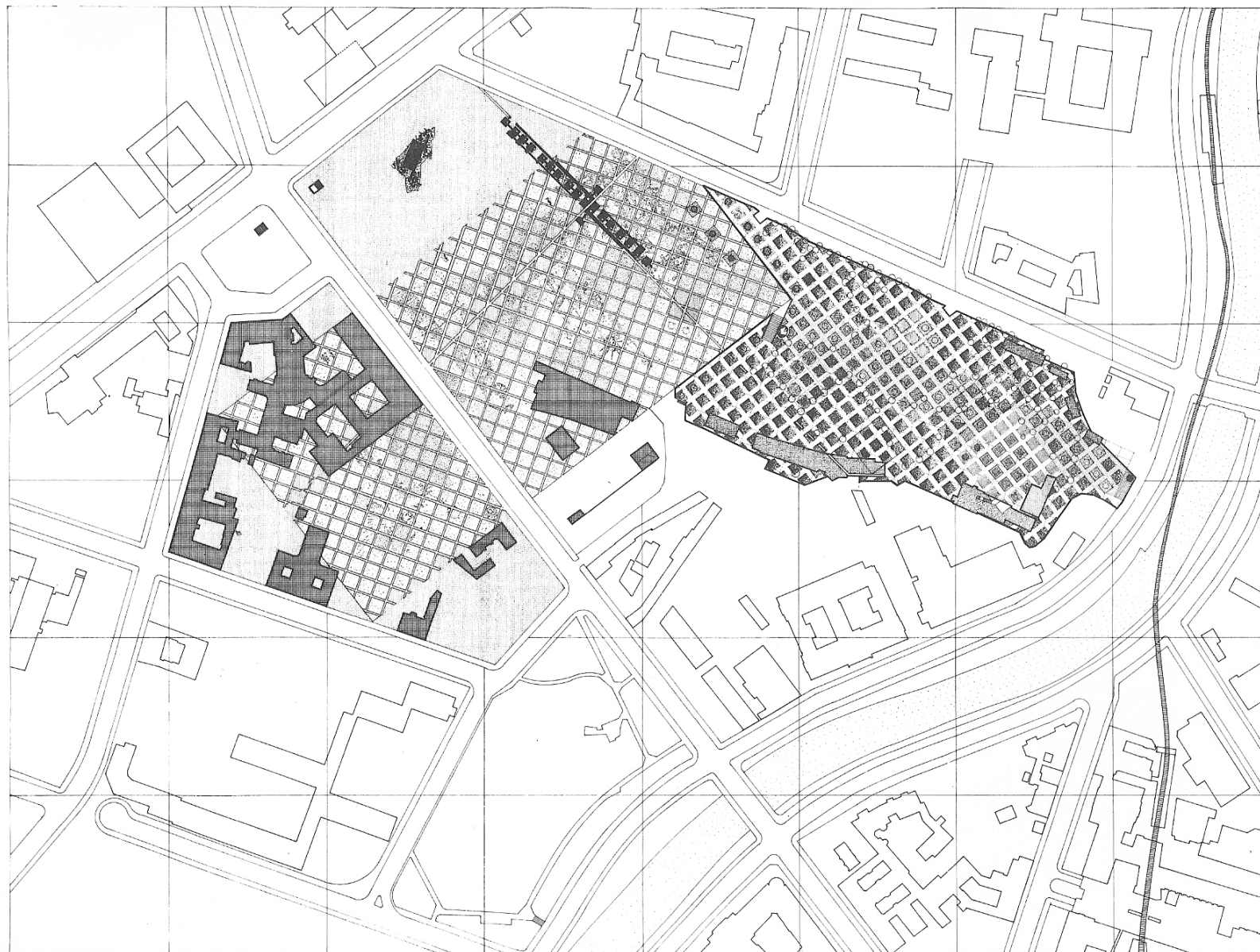
SÜDLICHE  
FRIEDRICHSTADT

SOMMERAKADEMIE  
FÜR  
ARCHITEKTUR  
1978

LM-07

AXONOMETRIC





KARTE  
VON  
BERLIN

1:10 0 0

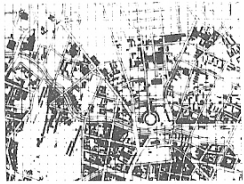
SÜDLICHE  
FRIEDRICHSTADT

SOMMERAKADEMIE  
FÜR  
ARCHITEKTUR  
1978

LM-06

SITE PLAN





KARTE  
VON  
BERLIN

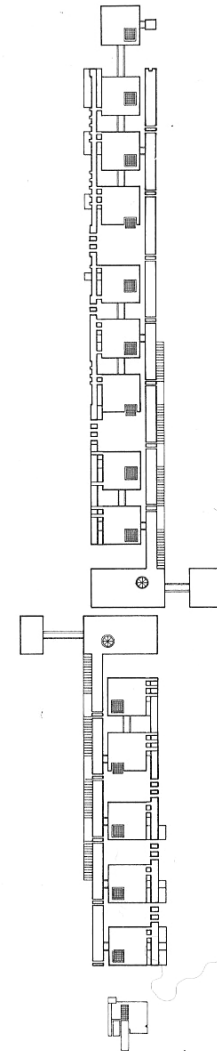
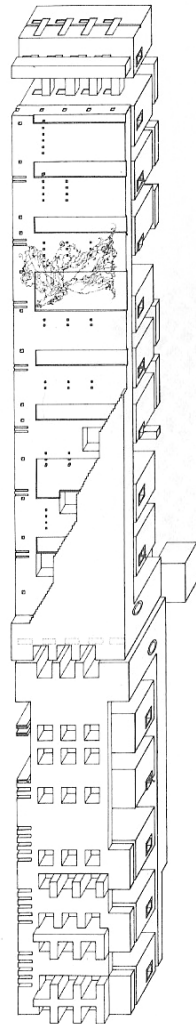
1:250

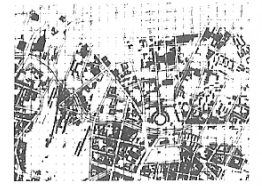
SÜDLICHE  
FRIEDRICHSTADT

SOMMERAKADEMIE  
FÜR  
ARCHITEKTUR  
1978

LM-11

AXONOMETRIC / PLAN

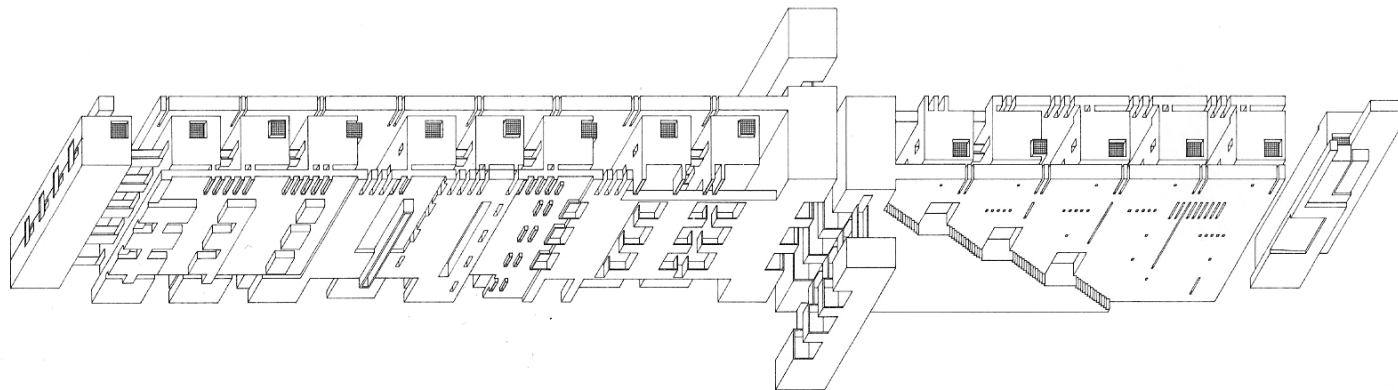




KARTE  
VON  
BERLIN

1:20 0

SÜDLICHE  
FRIEDRICHSTADT



SOMMERAKADEMIE  
FÜR  
ARCHITEKTUR  
1978

LM-08

AXONOMETRIC